

TRESPA® METEON® | EXTERIOR

IMAGINE  
SPECTACULAR  
FACADES



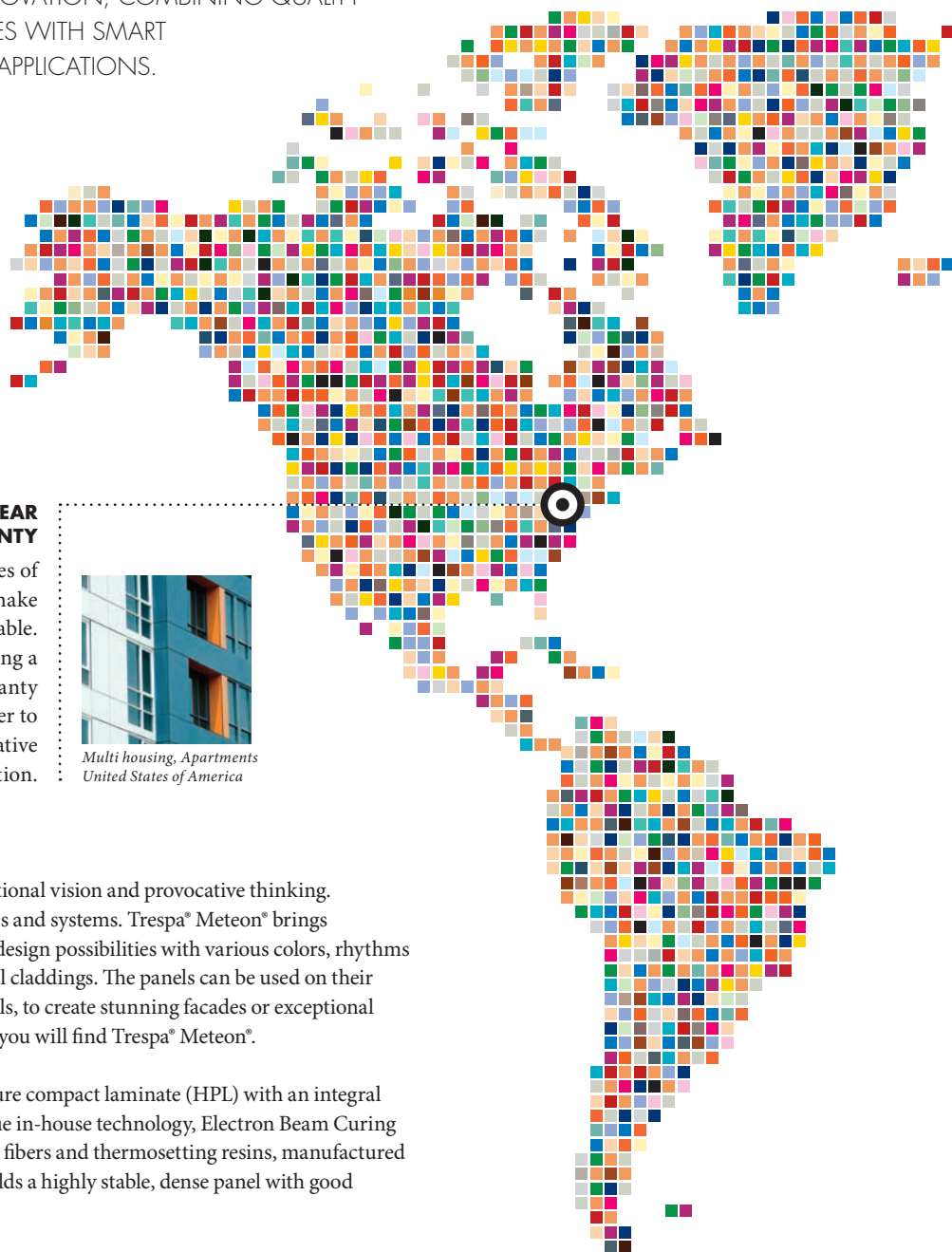
Think Trespa

TRESPA®

TRESPA® METEON®

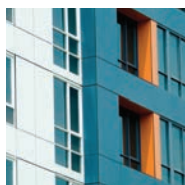
# COLORING THE WORLD

TRESPA INTERNATIONAL B.V. IS A LEADING INNOVATOR IN THE FIELD OF ARCHITECTURAL MATERIALS, RECOGNIZED INTERNATIONALLY AS A PREMIER DEVELOPER OF HIGH QUALITY PANELS FOR EXTERIOR CLADDING AND DECORATIVE FACADES. SINCE ITS FOUNDING IN 1960, TRESPA HAS WORKED CLOSELY WITH ARCHITECTS, DESIGNERS, INSTALLERS, DISTRIBUTORS AND END USERS GLOBALLY. TRESPA BELIEVES IN PRODUCT INNOVATION, COMBINING QUALITY MANUFACTURING TECHNOLOGIES WITH SMART SOLUTIONS FOR ARCHITECTURAL APPLICATIONS.



## 10-YEAR PRODUCT WARRANTY

The unique properties of Trespa® Meteon® panels make them highly durable. That's why Trespa is offering a ten year conditional warranty on its product. Please refer to your local sales representative for more information.



*Multi housing. Apartments  
United States of America*

## WHERE CONCEPT MEETS SOLUTION

Good design starts with inspiration, exceptional vision and provocative thinking. It comes to life with great materials, finishes and systems. Trespa® Meteon® brings compelling aesthetics and nearly limitless design possibilities with various colors, rhythms and depths to next-generation architectural claddings. The panels can be used on their own, or in combination with other materials, to create stunning facades or exceptional highlights. Where concept meets solution, you will find Trespa® Meteon®.

Trespa® Meteon® is a decorative high-pressure compact laminate (HPL) with an integral surface manufactured using Trespa's unique in-house technology, Electron Beam Curing (EBC). The blend of up to 70% wood-based fibers and thermosetting resins, manufactured under high pressures and temperatures yields a highly stable, dense panel with good strength-to-weight ratios.

Trespa® Meteon® stands out in vertical exterior wall coverings such as facade cladding, balcony paneling, sunblinds as well as horizontal exterior ceiling applications.

**Think Trespa**

FOR MORE DETAILED INFORMATION PLEASE VISIT [TRESPA.COM](http://TRESPA.COM) AND [TRESPA.INFO](http://TRESPA.INFO)



Public Building | France

### COMMITTED TO SAFETY

Trespa is committed to the safety of its processes and products. Two classes of Trespa® Miteon® are available: Standard grade and enhanced Fire-Retardant grade (FR). Please contact your local Trespa representative for local availability.

### LOW MAINTENANCE & EASY TO CLEAN

The closed surface of Trespa® Miteon® practically withstands dirt accumulation, keeping the product smooth and easy to clean.

### LONG LIFE PERFORMANCE

Trespa® Miteon® is ideal for prolonged exposure as it stays looking great for many years and needs little maintenance.

Trespa® Miteon® remains the material of choice for architects today, because they can be sure that it will still define the urban landscape tomorrow.



Education | China

### SOLID & STURDY

Consistent and high-density throughout, Trespa® Miteon® holds screws and other mechanical fixings solidly. The panels have good compressive and tensile strength and excellent pullout and impact resistance, yet Trespa® Miteon® is easily machinable and workable like hardwood.



### WIDE RANGE OF VIBRANT COLORS AND FINISHES

Trespa® Miteon® is at the forefront of attractive design and architecture.

The product is available in many standard colors and finishes and even custom-made project colors. The acclaimed Naturals and Wood Decors collections offer a wide range of wood grains and organic motifs.



Leisure, Cultural, Sports Spain

### WEATHER RESISTANT & COLOR STABILITY

Trespa® Miteon® performs exceptionally well outdoors. Sun and rain will have no significant effect on the panel's surface.



Commercial Office Australia

### RESPECT FOR OUR ENVIRONMENT

Trespa strongly believes that any change should start with the company itself. Trespa's approach towards sustainability is framed by the principle 'Do No Harm, Do Good, Do Better' and starts from an objective and fact based analysis (LCA) of its environmental footprint. For more information on Trespa's Life Cycle Analysis, please visit [trespa.com](http://trespa.com).

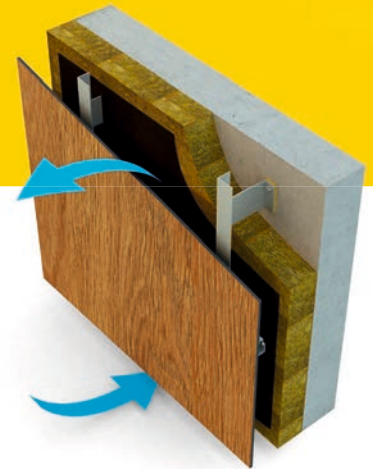
## VENTILATED FACADES

Trespa® Meteon® panels are perfect for use in innovative and functional ventilated facade systems. Used on its own or as a highlight in combination with other materials, Trespa® Meteon® determines the look and underlines the qualities of a building.

Trespa is at the forefront of cutting-edge building techniques. Ventilating facades are more than a design gesture - they may provide energy efficient, long-lasting properties.

### ADVANTAGES OF VENTILATED FACADE SYSTEMS

- A continuous airflow draws air through the cavity, aiding in the removal of heat and moisture from rain or condensation.
- The rainscreen also blocks parts of the solar radiation and accommodates continuous insulation, which may improve the overall energy performance of the building.
- Residents and users not only find themselves in a low-maintenance-environment, but the dry and comfortable conditions of the building may also have a positive contribution to the indoor environment.



## STRONG FOCUS ON SERVICE

As specialist in exterior cladding, Trespa provides knowledge and technical information to aid the design and construction of paneled facades. During all phases of a project, from design and specification to installation, Trespa has a strong focus on service and can provide answers and information to support customers.

Trespa is fully aware that architects wish to realize their specific design going beyond standard solutions. Many customised facades can be realized by offering specific services, especially where Trespa is involved in the early design stage, to give customers detailed advice.



### SOLUTION PROVIDING AND VALUE ADDING SERVICES

#### ■ PRODUCT TRAINING SESSIONS

Trespa provides training sessions for both installers and designers on topics such as the ventilated facade concept and installation, and product properties and features.

#### ■ TECHNICAL SUPPORT

Trespa can guide its partners to achieve optimal technical solutions with appropriate fixing systems.

#### ■ INSTRUCTIONS FOR PANEL HANDLING AND MACHINING

High aesthetical quality requires craftsmanship, the right tools and equipment. Trespa will gladly provide advice on these areas.

#### ■ DESIGN SUPPORT

Trespa Studio, a multidisciplinary group working on innovative solutions, supporting architects in facade design and offering a special "graphics on facades" service (only available for selected

countries), that creates unique images with a random repeat (patent pending).

#### ■ DESIGN CENTRES

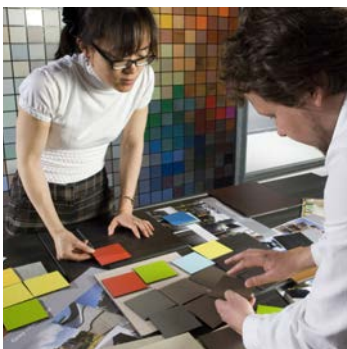
Trespa Design Centres are based in New York, Barcelona, Santiago de Chile and Weert (the Netherlands). These are unique collaborative spaces inspiring architects, installers and clients. These Centres offer conferences and seminars that facilitate meaningful dialogues with Trespa's partners.

#### ■ INTERNATIONAL CUSTOMER SUPPORT SERVICE

Trespa Customer Service Desk is available throughout all the regions in which the company is active.

#### ■ CUSTOM MADE SOLUTIONS

Through intensive dialogue with architects and by offering Trespa's customized colors (for projects over 200m<sup>2</sup> (~ 2,153 ft<sup>2</sup>)), Trespa has contributed to the realization of many unique facade designs. These customized facade designs are not only beautiful, but also cost effective.





# UNI COLOURS

<b>A05.0.0</b> Pure White	<b>A04.0.0</b> Cream White	<b>A05.1.0</b> Papyrus White	<b>A05.1.1</b> Stone Beige	<b>A08.2.1</b> Mid Beige	<b>A08.3.1</b> Stone Grey	<b>A06.7.1</b> Natural Greige	<b>A08.8.1</b> Dark Brown
<b>A03.0.0</b> White	<b>A04.0.1</b> Pearl Yellow	<b>A07.1.1</b> Sand	<b>A08.2.3</b> Salmon	<b>A10.3.4</b> Terra Cotta	<b>A11.4.4</b> English Red	<b>A10.4.5</b> Sienna Brown	<b>A14.7.2</b> Deep Red Brown
<b>A03.1.0</b> Pastel Grey	<b>A04.0.2</b> Pale Yellow	<b>A05.1.2</b> Champagne	<b>A05.1.4</b> Sun Yellow	<b>A06.3.5</b> Ochre	<b>A08.4.5</b> Rusty Red	<b>A09.6.4</b> Mahogany Red	<b>A12.6.3</b> Wine Red
<b>A35.4.0</b> Cactus Green	<b>A37.2.3</b> Spring Green	<b>A41.0.6</b> Mojito Green	<b>A04.0.5</b> Zinc Yellow	<b>A04.1.7</b> Gold Yellow	<b>A10.1.8</b> Red Orange	<b>A12.1.8</b> Passion Red	<b>A12.3.7</b> Carmine Red
<b>A33.3.6</b> Brilliant Green	<b>A36.3.5</b> Turf Green	<b>A37.0.8</b> Lime Green	<b>A32.2.1</b> Translucent Green	<b>A21.1.0</b> Winter Grey	<b>A24.4.1</b> Steel Blue	<b>A20.5.2</b> Lavender Blue	<b>A17.3.5</b> Cyclam
<b>A34.8.1</b> Forest Green	<b>A32.7.2</b> Dark Green	<b>A30.3.2</b> Verdigris	<b>A22.2.1</b> Bluish Grey	<b>A28.6.2</b> Mid Green	<b>A26.5.4</b> Pacific	<b>A22.4.4</b> Brilliant Blue	<b>A20.2.3</b> Light Viola
<b>A25.8.1</b> Anthracite Grey	<b>A21.7.0</b> Steel Grey	<b>A28.2.1</b> Aquamarine	<b>A22.3.1</b> Ocean Grey	<b>A22.2.4</b> Powder Blue	<b>A22.1.6</b> Royal Blue	<b>A21.5.4</b> Cobalt Blue	<b>A22.6.2</b> Dark Denim
<b>A11.8.0</b> Ceramic Greige	<b>A05.5.0</b> Quartz Grey	<b>A21.5.1</b> Mid Grey	<b>A03.4.0</b> Silver Grey	<b>A24.0.3</b> Polar Blue	<b>A23.0.4</b> Mineral Blue	<b>A20.7.2</b> Dark Blue	<b>A90.0.0</b> Black
<b>A06.5.1</b> Toscana Greige	<b>A10.6.1</b> Taupe	<b>A16.5.1</b> Mauve					

## PROJECT COLORS



### COLOR YOUR IMAGINATION

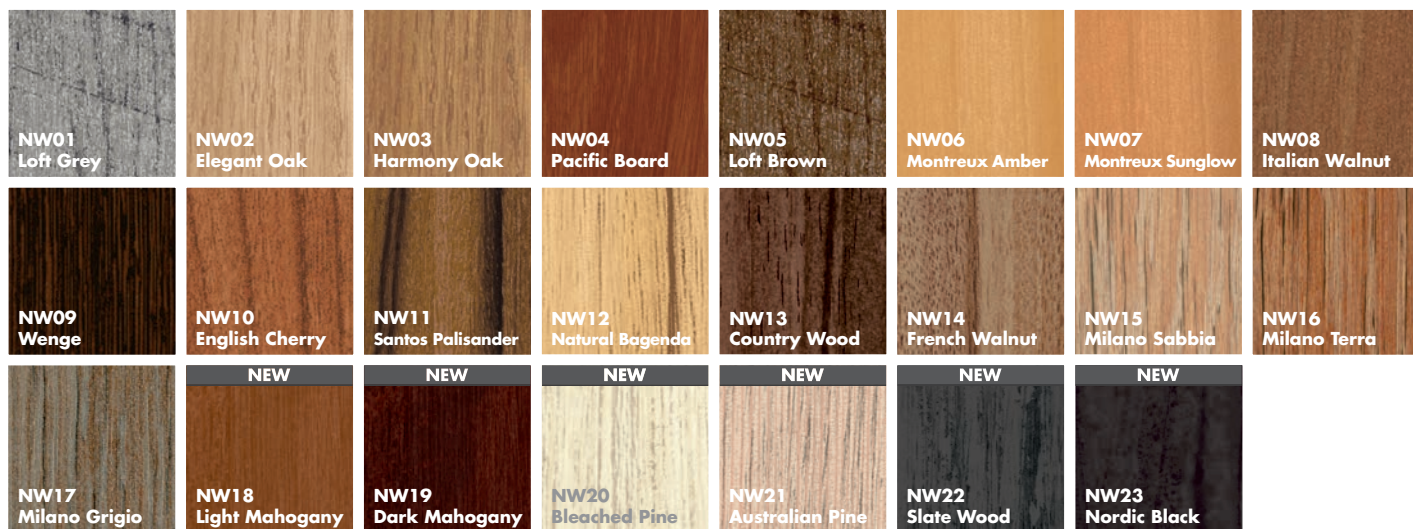
Trespa® Meteon® architectural panels are available in a wide choice of standard colors and effects. To create facades that are even more individual and expressive, Trespa® Meteon® panels can be custom-made in special project colors. For more information please contact your local Trespa representative.

## METALLICS



*Trespa® Meteon® Metallics panels feature a directional colored surface.*

## WOOD DECORS



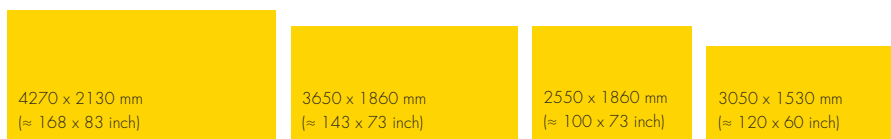
*Trespa® Meteon® Wood Decors panels feature a directional colored surface. The grain of Trespa® Meteon® Wood Decors runs the length direction of the panel.*

## NATURALS



*Trespa® Meteon® Naturals panels feature a directional colored surface.*

### SIZES



*The large size of this panel allows an efficient machining of the product.*

*Note: Full size panels feature a squareness tolerance. Please check [trespa.info](https://trespa.info) for the detailed and up to date Delivery Program and Material Property Datasheet.*

### THICKNESSES



## UNI COLOURS

Colour code	Colour name	Satin				Rock		Gloss
A03.0.0	White	■	■	■	■	■	■	■
A03.1.0	Pastel Grey	■	■	■	■	■	■	
A03.4.0	Silver Grey	■	■	■	■	■	■	
A04.0.0	Cream White	■	■	■	■	■	■	
A04.0.1	Pearl Yellow	■	■	■	■	■	■	
A04.0.2	Pale Yellow	■	■	■	■	■	■	
A04.0.5	Zinc Yellow	■	■	■	■	■	■	
A04.1.7	Gold Yellow	■	■	■	■	■	■	
A05.0.0	Pure White	■	■	■	■	■	■	■
A05.1.0	Papyrus White	■	■	■	■	■	■	
A05.1.1	Stone Beige	■	■	■	■	■	■	
A05.1.2	Champagne	■	■	■	■	■	■	
A05.1.4	Sun Yellow	■	■	■	■	■	■	
A05.5.0	Quartz Grey	■	■	■	■	■	■	
A06.3.5	Ochre	■	■	■	■	■	■	
A06.5.1	Toscana Greige	■	■	■	■	■	■	
A06.7.1	Natural Greige	■	■	■	■	■	■	
A07.1.1	Sand	■	■	■	■	■	■	
A08.2.1	Mid Beige	■	■	■	■	■	■	
A08.2.3	Salmon	■	■	■	■	■	■	
A08.3.1	Stone Grey	■	■	■	■	■	■	
A08.4.5	Rusty Red	■	■	■	■	■	■	
A08.8.1	Dark Brown	■	■	■	■	■	■	
A09.6.4	Mahogany Red	■	■	■	■	■	■	
A10.1.8	Red Orange	■	■	■	■	■	■	
A10.3.4	Terra Cotta	■	■	■	■	■	■	
A10.4.5	Sienna Brown	■	■	■	■	■	■	
A10.6.1	Taupe	■	■	■	■	■	■	
A11.4.4	English Red	■	■	■	■	■	■	
A11.8.0	Ceramic Greige	■	■	■	■	■	■	
A12.1.8	Passion Red	■	■	■	■	■	■	
A12.3.7	Carmin Red	■	■	■	■	■	■	
A12.6.3	Wine Red	■	■	■	■	■	■	■
A14.7.2	Deep Red Brown	■	■	■	■	■	■	
A16.5.1	Mauve	■	■	■	■	■	■	
A17.3.5	Cyclam	■	■	■	■	■	■	
A20.2.3	Light Viola	■	■	■	■	■	■	
A20.5.2	Lavender Blue	■	■	■	■	■	■	
A20.7.2	Dark Blue	■	■	■	■	■	■	
A21.1.0	Winter Grey	■	■	■	■	■	■	
A21.5.1	Mid Grey	■	■	■	■	■	■	■
A21.5.4	Cobalt Blue	■	■	■	■	■	■	
A21.7.0	Steel Grey	■	■	■	■	■	■	
A22.1.6	Royal Blue	■	■	■	■	■	■	
A22.2.1	Bluish Grey	■	■	■	■	■	■	
A22.2.4	Powder Blue	■	■	■	■	■	■	
A22.3.1	Ocean Grey	■	■	■	■	■	■	
A22.4.4	Brilliant Blue	■	■	■	■	■	■	
A22.6.2	Dark Denim	■	■	■	■	■	■	
A23.0.4	Mineral Blue	■	■	■	■	■	■	
A24.0.3	Polar Blue	■	■	■	■	■	■	
A24.4.1	Steel Blue	■	■	■	■	■	■	
A25.8.1	Anthracite Grey	■	■	■	■	■	■	■
A26.5.4	Pacific	■	■	■	■	■	■	
A28.2.1	Aquamarine	■	■	■	■	■	■	
A28.6.2	Mid Green	■	■	■	■	■	■	
A30.3.2	Verdigris	■	■	■	■	■	■	
A32.2.1	Translucent Green	■	■	■	■	■	■	
A32.7.2	Dark Green	■	■	■	■	■	■	
A33.3.6	Brilliant Green	■	■	■	■	■	■	
A34.8.1	Forest Green	■	■	■	■	■	■	
A35.4.0	Cactus Green	■	■	■	■	■	■	
A36.3.5	Turf Green	■	■	■	■	■	■	
A37.0.8	Lime Green	■	■	■	■	■	■	
A37.2.3	Spring Green	■	■	■	■	■	■	
A41.0.6	Majito Green	■	■	■	■	■	■	
A90.0.0	Black	■	■	■	■	■	■	■

For available sheet sizes and thicknesses for the above finishes, please check [trespa.info](https://trespa.info) for the detailed and up to date Delivery Program and Material Property Datasheet. Alternatively you can use the Product Selector on [trespa.com](https://trespa.com) (after choosing the country where the project is located).

## METALLICS

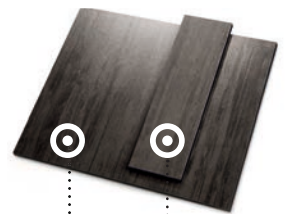
Colour code	Colour name	Satin				Rock		Gloss
M04.4.1	Titanium Silver	■	■	■	■	■	■	
M05.5.1	Titanium Bronze	■	■	■	■	■	■	
M06.4.1	Amber	■	■	■	■	■	■	
M12.4.2	Garnet Red	■	■	■	■	■	■	
M20.4.2	Northern Light	■	■	■	■	■	■	
M21.3.4	Azurite Blue	■	■	■	■	■	■	
M21.8.1	Graphite Grey	■	■	■	■	■	■	■
M24.3.3	Lagoon	■	■	■	■	■	■	
M35.7.1	Malachite Green	■	■	■	■	■	■	
M40.4.3	Mustard Yellow	■	■	■	■	■	■	
M51.0.1	Aluminium Grey	■	■	■	■	■	■	■
M51.0.2	Urban Grey	■	■	■	■	■	■	
M53.0.1	Copper Red	■	■	■	■	■	■	
M53.0.2	Copper Yellow	■	■	■	■	■	■	

## WOOD DECORS

Colour code	Colour name	Satin		Matt	
NW01	Loft Grey	■	■	■	■
NW02	Elegant Oak	■	■	■	■
NW03	Harmony Oak	■	■		
NW04	Pacific Board	■	■	■	■
NW05	Loft Brown	■	■	■	■
NW06	Montreux Amber	■	■		
NW07	Montreux Sunglow	■	■		
NW08	Italian Walnut	■	■	■	■
NW09	Wenge	■	■	■	■
NW10	English Cherry	■	■		
NW11	Santos Palisander	■	■		
NW12	Natural Bagenda	■	■		
NW13	Country Wood	■	■		
NW14	French Walnut	■	■	■	■
NW15	Milano Sabbia	■	■		
NW16	Milano Terra	■	■	■	■
NW17	Milano Grigio	■	■	■	■
NW18	Light Mahogany	■	■		
NW19	Dark Mahogany	■	■		
NW20	Bleached Pine	■	■	■	■
NW21	Australian Pine	■	■	■	■
NW22	Slate Wood	■	■	■	■
NW23	Nordic Black	■	■	■	■

## NATURALS

Colour code	Colour name	Matt	
NA05	Erosion	■	■
NA06	Patina	■	■
NA07	Deep Blue	■	■
NA08	Sierra Red	■	■
NA09	Oxidation	■	■
NA10	Titanic	■	■
NA11	French Limestone	■	■
NA12	Natural Chalkstone	■	■
NA13	Silver Quartzite	■	■
NA14	Weathered Basalt	■	■
NA15	Indian Terra Cotta	■	■



### FINISHES



### TYPES

- SINGLE SIDED DECORATIVE: decorative side with non decorative black reverse
- DOUBLE SIDED DECORATIVE: same color for front and reverse side of the panel
- VARITOP: decorative side with standard white decorative Satin reverse (A03.0.0)
- DUOCOLOUR: different color for front and reverse side of the panel



## CONTACT US

### TRESPA INTERNATIONAL B.V.

P.O. Box 110, 6000 AC Weert  
Wetering 20, 6002 SM Weert  
The Netherlands  
[www.trespa.com](http://www.trespa.com)

### TRESPA NORTH AMERICA LTD.

62 Greene Street (Ground Floor)  
New York, NY 10012  
United States of America  
Tel: +1 800 487-3772  
Fax: +1 866 298 3499  
[Info.NorthAmerica@Trespa.com](mailto:Info.NorthAmerica@Trespa.com)

### TRESPA UK LTD.

35 Calthorpe Road  
Edgbaston  
Birmingham, B15 1TS  
United Kingdom  
Tel: 0808-2340268  
Fax: 0808-2341377  
[Info.UK@Trespa.com](mailto:Info.UK@Trespa.com)

## VISIT US

### TRESPA DESIGN CENTRE NEW YORK

62 Greene Street (Ground Floor)  
New York, NY 10012  
United States of America  
Tel: +1 212 334 6888  
Fax: +1 866 298 3499  
[TDC.NewYork@Trespa.com](mailto:TDC.NewYork@Trespa.com)  
[www.trespa.com/us/tdc](http://www.trespa.com/us/tdc)

### TRESPA DESIGN CENTRE WEERT

Wetering 20  
6002 SM Weert  
The Netherlands  
Tel: +31 (0) 495 458 845  
[TDC.Weert@Trespa.com](mailto:TDC.Weert@Trespa.com)  
[www.trespa.com/us/tdc](http://www.trespa.com/us/tdc)

### TRESPA DESIGN CENTRE BARCELONA

Calle Ribera 5,  
08003 Barcelona  
Spain  
Tel: +34 (0) 93 295 4193  
Fax: +34 (0) 93 116 3300  
[TDC.Barcelona@Trespa.com](mailto:TDC.Barcelona@Trespa.com)  
[www.trespa.com/us/tdc](http://www.trespa.com/us/tdc)

### TRESPA DESIGN CENTRE SANTIAGO

Eliodoro Yáñez 2831  
Torre A - Local 1  
Providencia, Santiago  
Chile  
Tel: +56 2 4069990  
[TDC.Santiago@Trespa.com](mailto:TDC.Santiago@Trespa.com)  
[www.trespa.com/us/tdc](http://www.trespa.com/us/tdc)

## FOLLOW US



## DISCLAIMER

### GENERAL

These terms apply to the use of this document and such use automatically means that the other party agrees to these terms. The information provided by Trespa International B.V. ("Trespa") in this document is solely indicative. Trespa is unable to warrant the accuracy and completeness of this information. Trespa may change the information included in this document at any time and without further notice. Trespa's customers and third parties must ascertain that they have the most recent document (for the most recent version, please consult: [www.trespa.com](http://www.trespa.com)). No rights can be derived from the information provided; the use of the information is at the other party's risk and responsibility. Trespa does not warrant that the information in this document is suitable for the purpose for which it is consulted by the other party. This document does not contain any design, structural calculation, estimate or other warranty or representation that customers and third parties may rely on. This document does not guarantee any properties of Trespa products. Colors used in Trespa's communications (including but not limited to printed matter) and in samples of Trespa's products may differ from the colors of the Trespa products to be supplied. Samples are not intended for use in product tests and are

not representative of characteristics of the Trespa products. Trespa's products and samples are produced within the specified color tolerances and the colors (of production batches) may differ, even if the same color is used. The viewing angle also influences the color perception. Metallic panels feature a surface whose color appears to change based on the direction from which it is viewed. The specified color stability and color specifications relate only to the decorative surface of the Trespa products, not to the core material and samples of the Trespa products. Trespa products are delivered ex-works with straight, sawn sides. Customers and third parties must have a professional adviser inform them about (the suitability of) the Trespa products for all desired applications and about applicable laws and regulations. Trespa does not warrant the above. The most recent version of the current delivery program and the Material Properties Datasheet can be found at [www.trespa.info](http://www.trespa.info). Only the information in the most recent and valid Material Properties Datasheet should be used to select and provide advice regarding Trespa products. Trespa reserves the right to change (the specifications for) its products without prior notice.

### LIABILITY

Trespa is not liable (neither contractual nor

non-contractual) for any damage arising from or related to the use of this document, except if and to the extent that such damage is the result of willful misconduct or gross negligence on the part of Trespa and/or its management. The limitation of liability applies to all parties affiliated with Trespa, including but not limited to its officers, directors, employees, affiliated enterprises, suppliers, distributors, agents, and representatives.

### GENERAL CONDITIONS

All oral and written statements, offers, quotations, sales, supplies, deliveries and/or agreements and all related activities of Trespa are governed by the Trespa General Terms and Conditions of Sale (*Algemene verkoopvoorwaarden Trespa International B.V.*) filed with the Chamber of Commerce and Industry for Noord- en Midden-Limburg in Venlo (NL) on 11 April 2007 under number 24270677, which can be found on and downloaded from the Trespa website, [www.trespa.com/documentation](http://www.trespa.com/documentation). All oral and written statements, offers, quotations, sales, supplies, deliveries and/or agreements and all related work of Trespa North America, Ltd. are governed by the Trespa North America General Terms and Conditions of Sale, which can be found on and downloaded from the Trespa website, [www.trespa.com](http://www.trespa.com).

com/documentation. A copy of these general conditions of sale will be provided free of charge on request. All general terms and conditions other than the conditions mentioned above are dismissed and do not apply, regardless of whether such terms and conditions are referred to on requests for offers, offer confirmations, stationery and/or other documents of the other party, even if Trespa does not expressly object to such terms and conditions

### INTELLECTUAL PROPERTY

All intellectual property rights and other rights regarding the content of this document (including logos, text and photographs) are owned by Trespa and/or its licensors. Any use of the content of this document, including distribution, reproduction, disclosure, storage in an automated data file or the dispatch of such a file without Trespa's prior written consent is explicitly prohibited. \* Trespa, Meteon, Athlon, TopLab, TopLab<sup>PLUS</sup>, TopLab<sup>ECO-FIBRE</sup>, Virtuon, Izeon, Volkern, Trespa Essentials and Mystic Metallics are registered trademarks of Trespa.

### QUESTIONS

Should you have any questions or comments, please do not hesitate to contact Trespa.

